

ALC Lectern



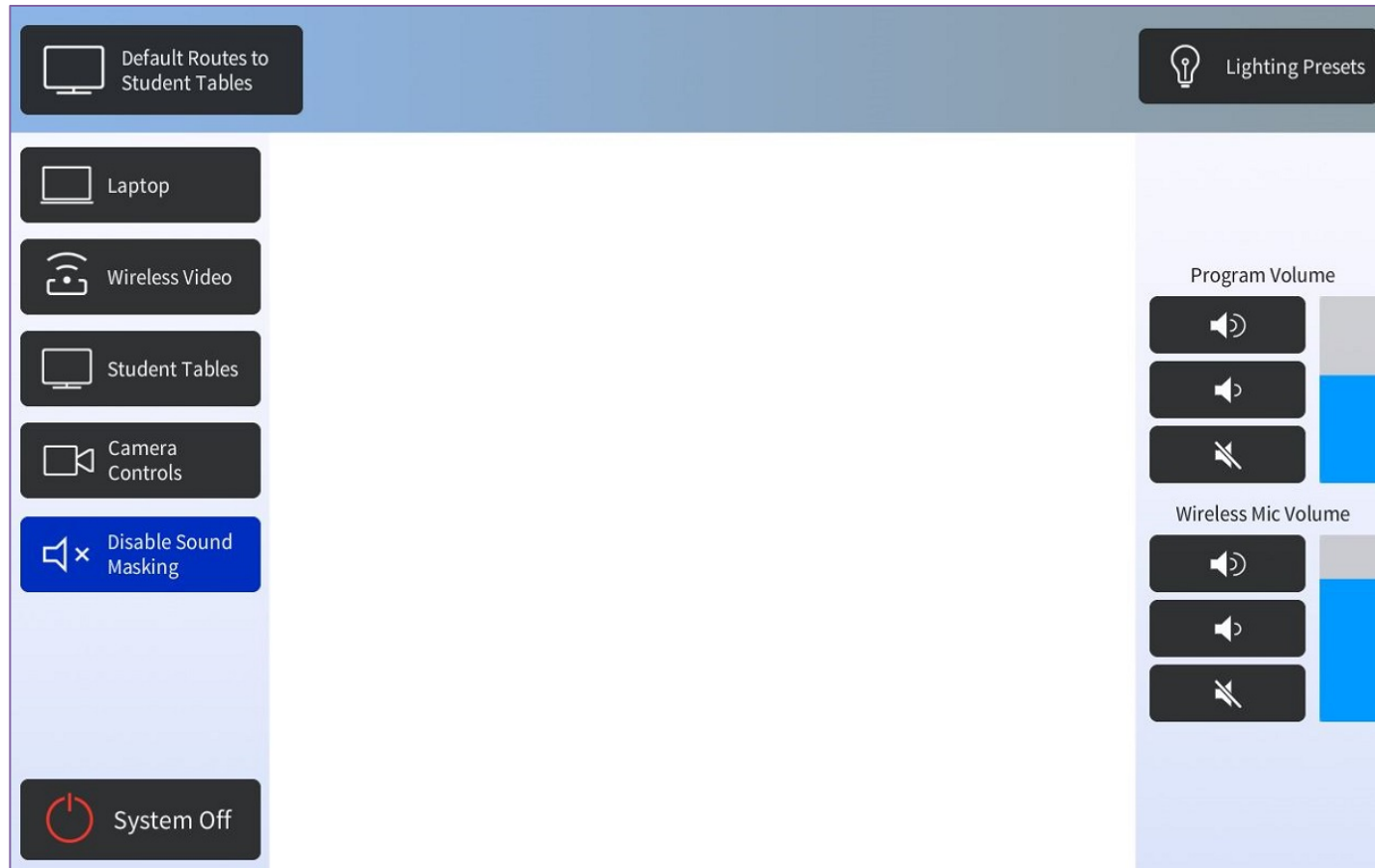
SCC 221 Active Learning Classroom, South Campus Center,
Instructional Support, HS Academic Services & Facilities

Lectern: Turn System On



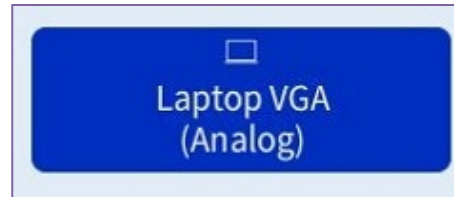
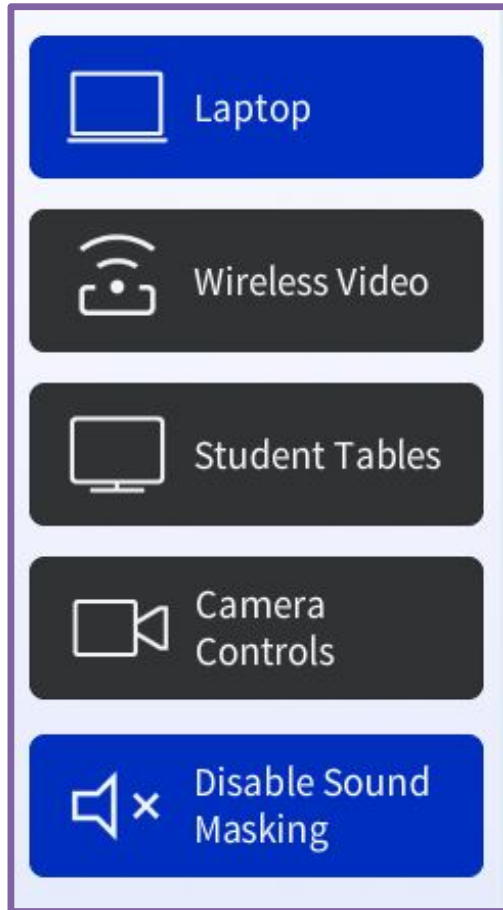
SCC 221 Active Learning Classroom, South Campus Center,
Instructional Support, HS Academic Services & Facilities

Lectern: System Connected



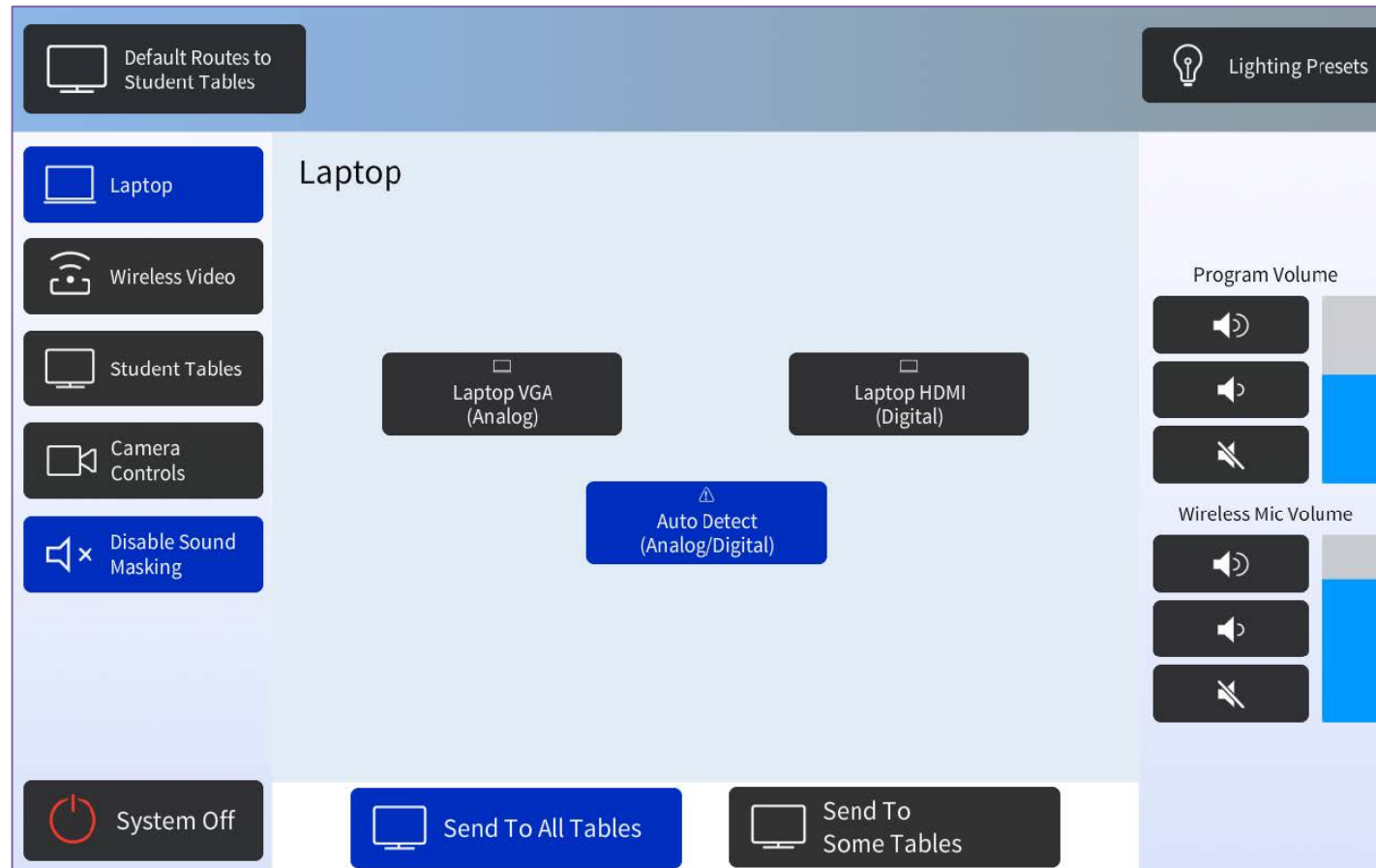
SCC 221 Active Learning Classroom, South Campus Center,
Instructional Support, HS Academic Services & Facilities

Connect Laptop: HDMI or VGA



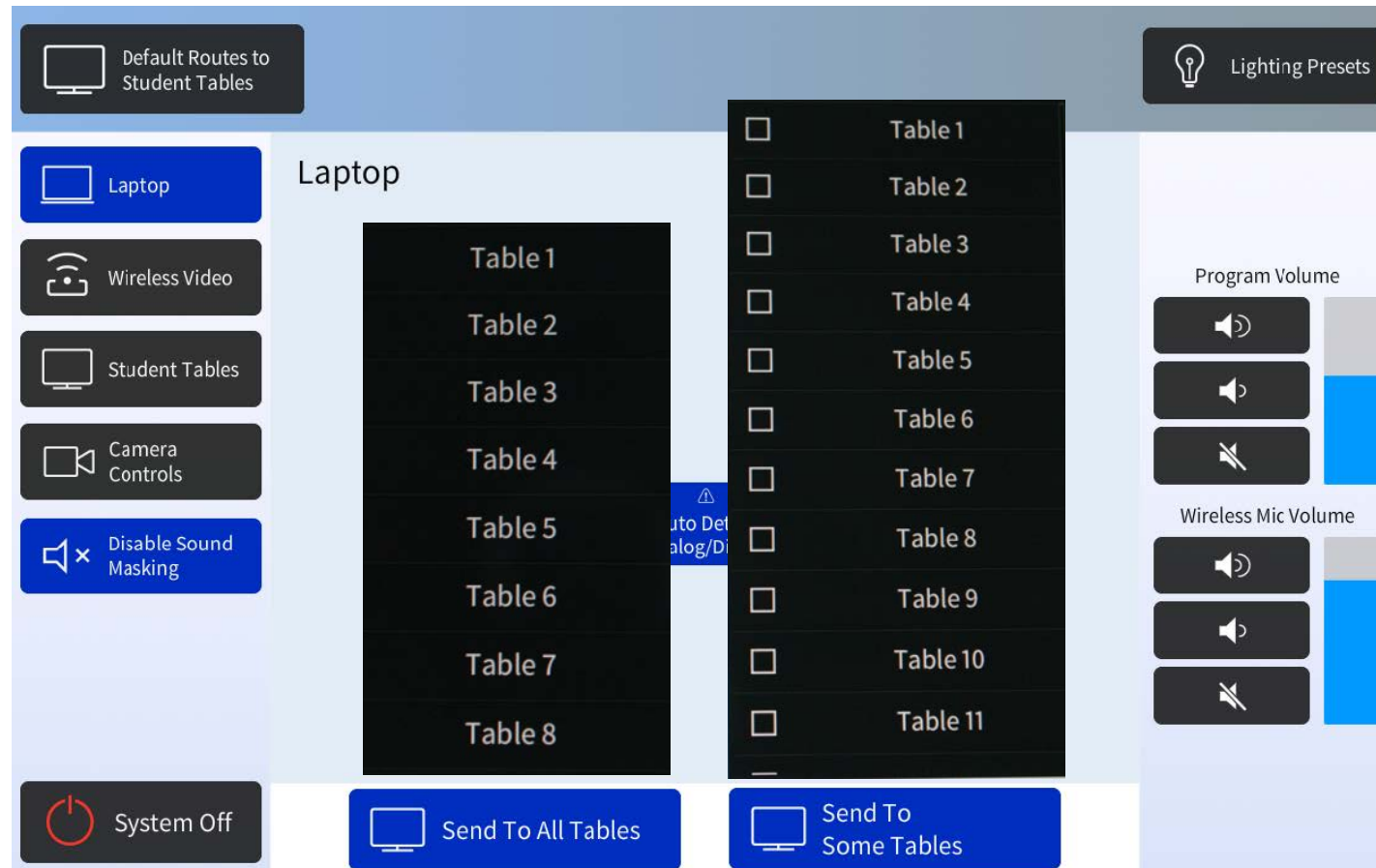
SCC 221 Active Learning Classroom, South Campus Center,
Instructional Support, HS Academic Services & Facilities

Lectern Laptop: Auto Detect



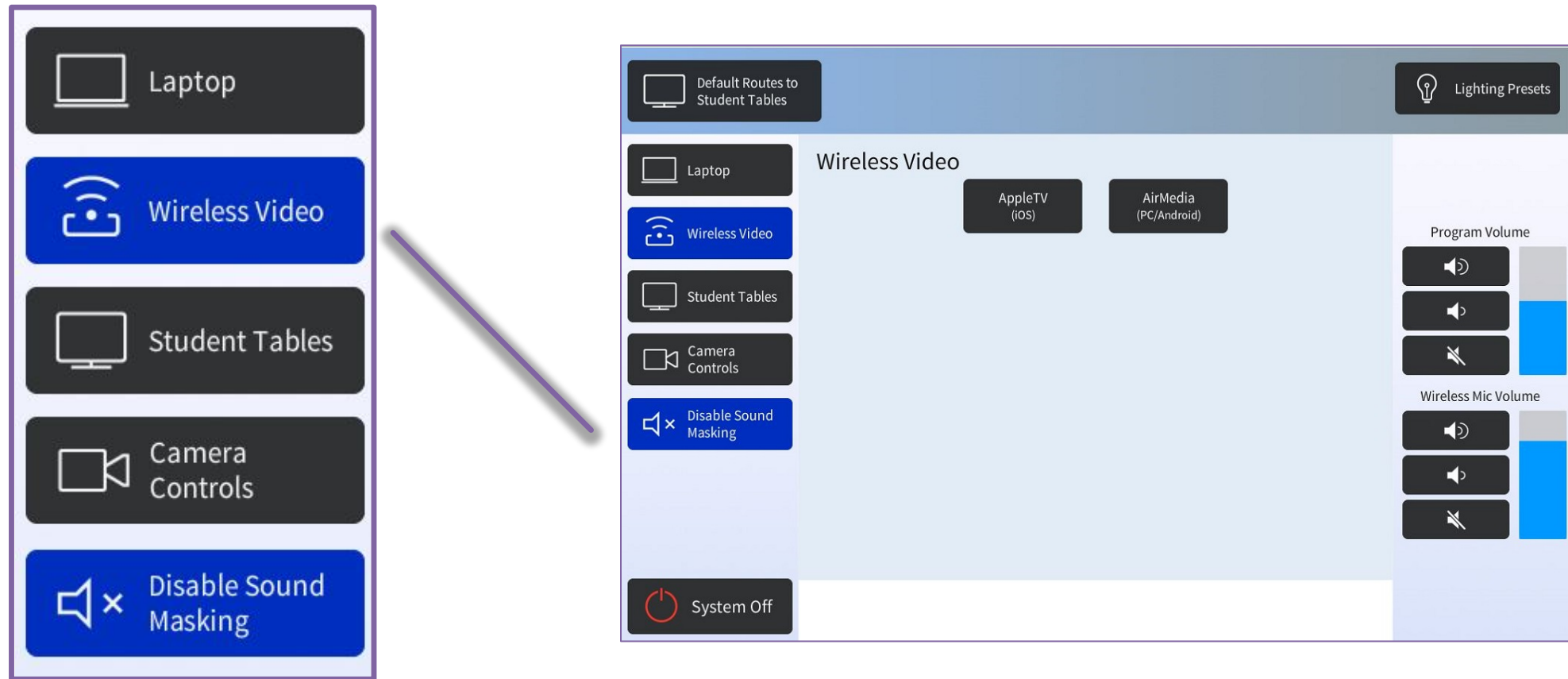
SCC 221 Active Learning Classroom, South Campus Center,
Instructional Support, HS Academic Services & Facilities

Send Laptop Content to All/Some Tables



SCC 221 Active Learning Classroom, South Campus Center,
Instructional Support, HS Academic Services & Facilities

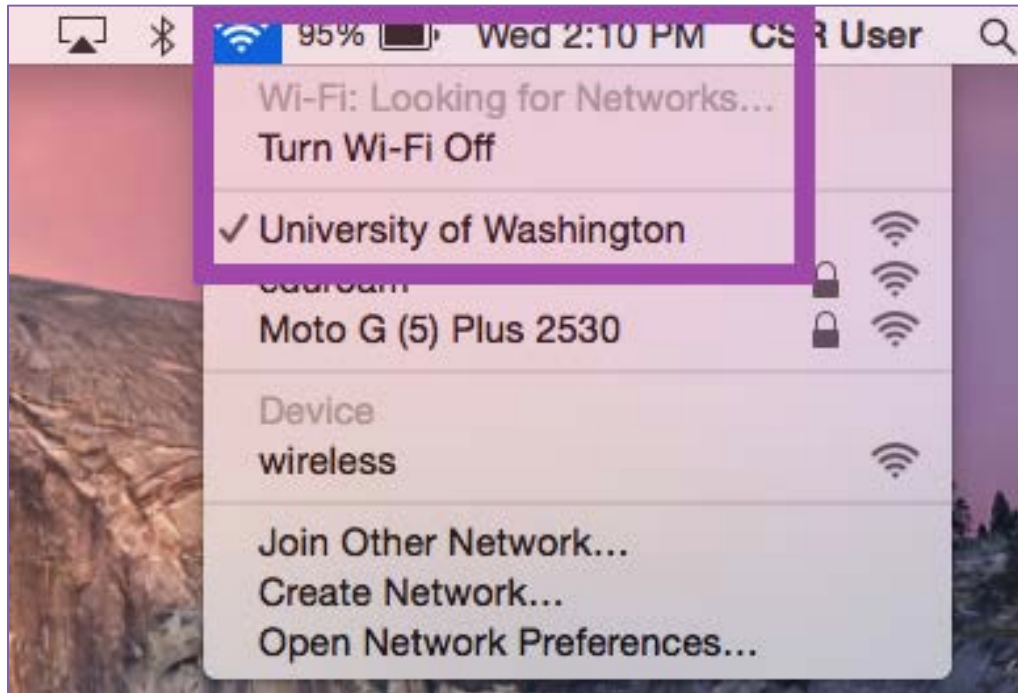
Connect Wireless Devices: AppleTV (iOS) or AirMedia (PC/Android)



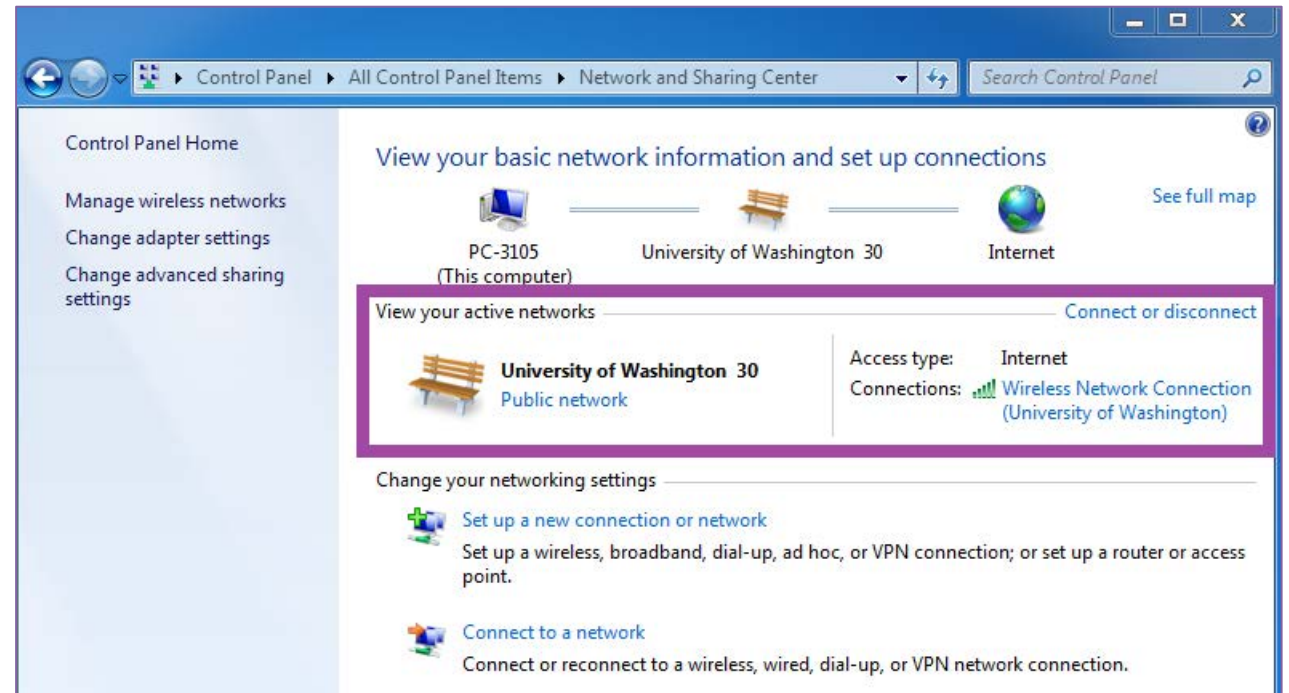
SCC 221 Active Learning Classroom, South Campus Center,
Instructional Support, HS Academic Services & Facilities

Connect any Wireless Device: Enable UW Wi-Fi / Network

MAC / iPhone



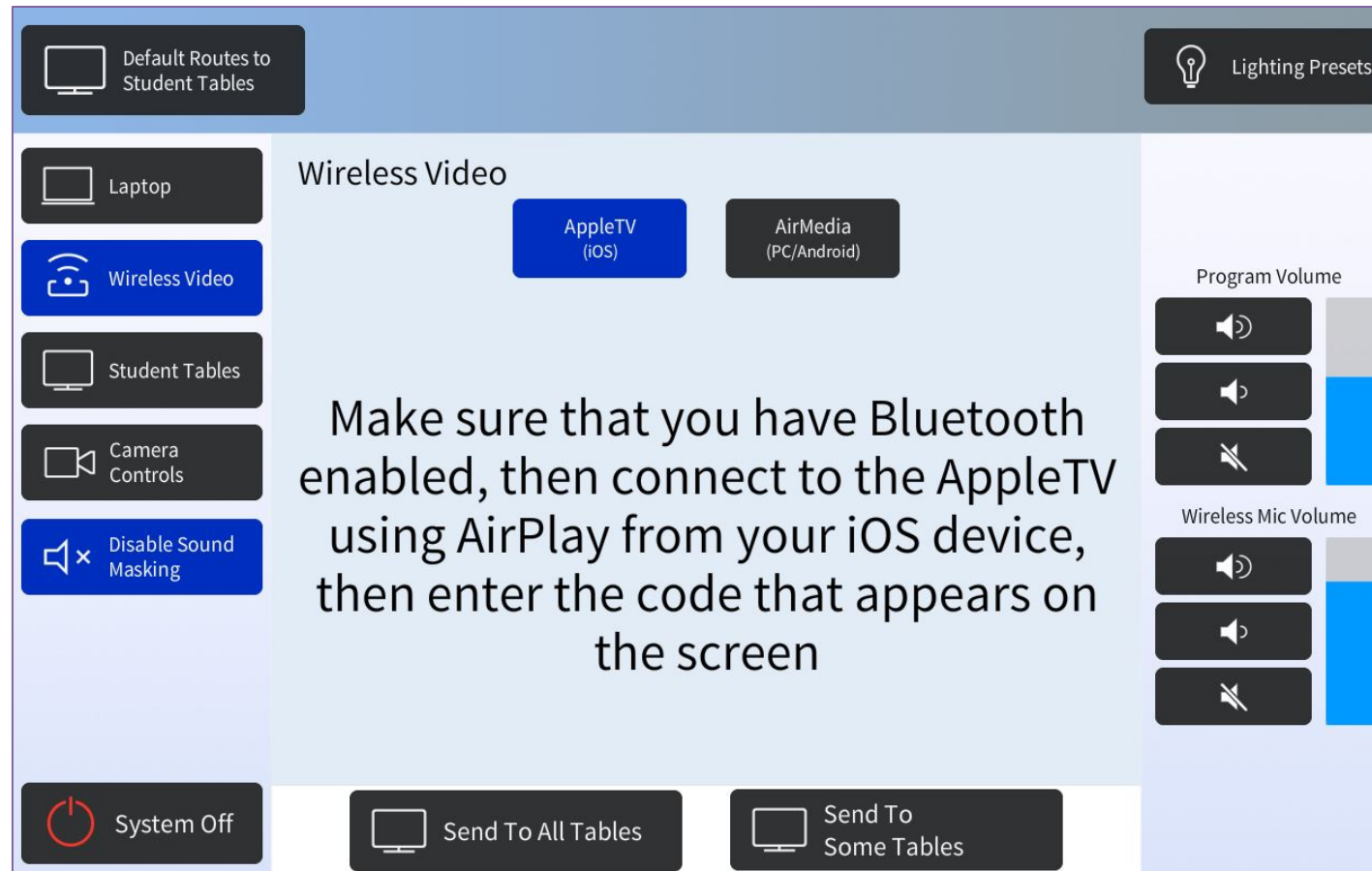
PC / Android



Connect iOS Wireless Device: Enable Bluetooth

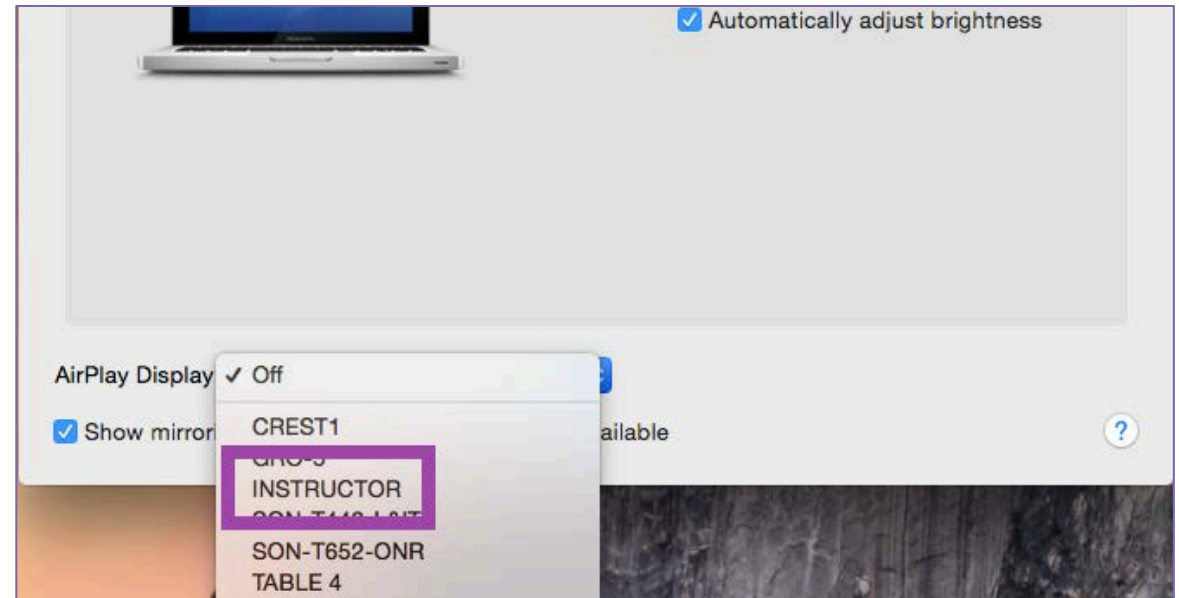
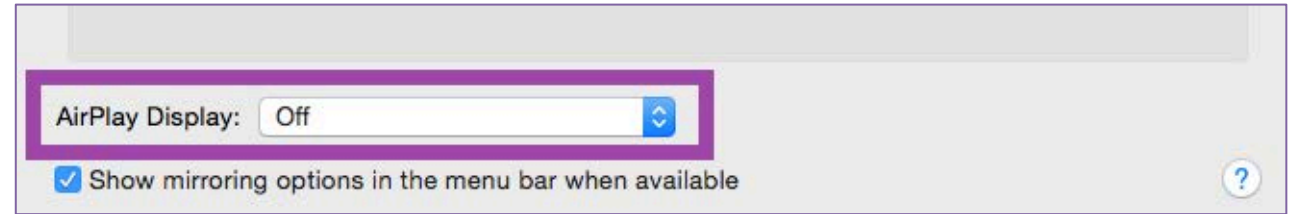
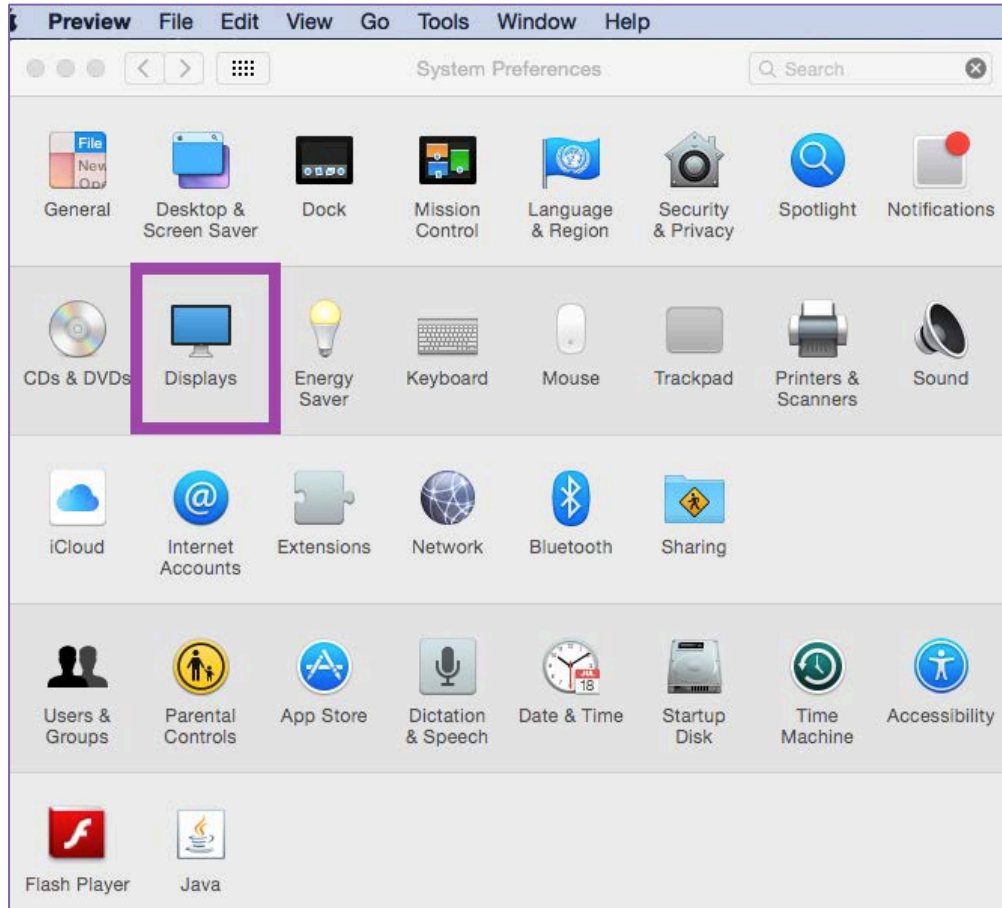


Wireless Video: Choosing AppleTV (iOS)

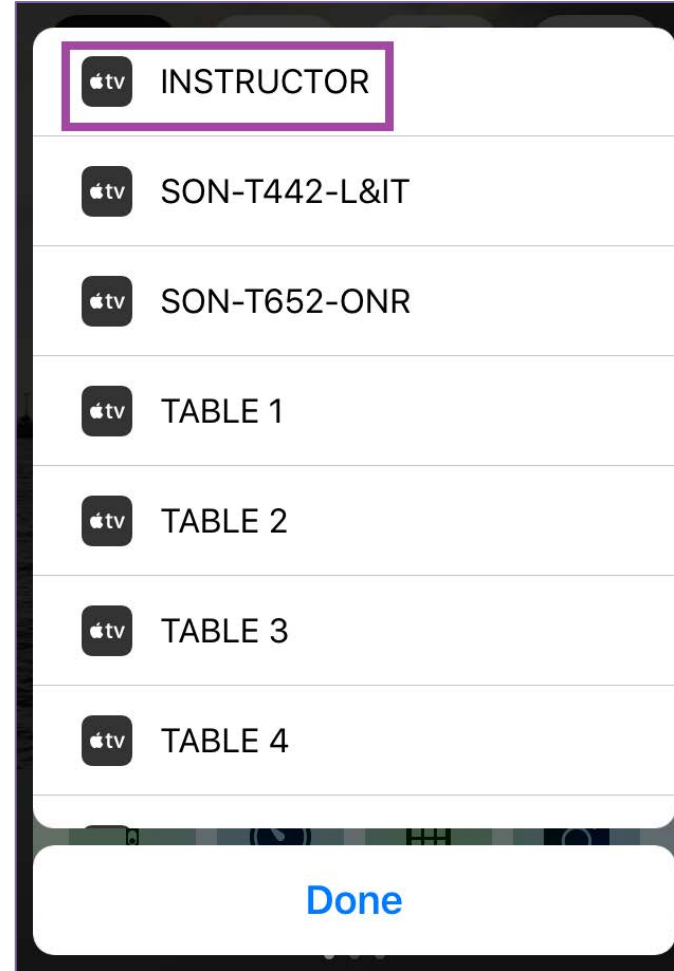


SCC 221 Active Learning Classroom, South Campus Center,
Instructional Support, HS Academic Services & Facilities

MAC (iOS): Select “Instructor” from AirPlay Display



iPhone: Select “Instructor” from AirPlay Mirroring

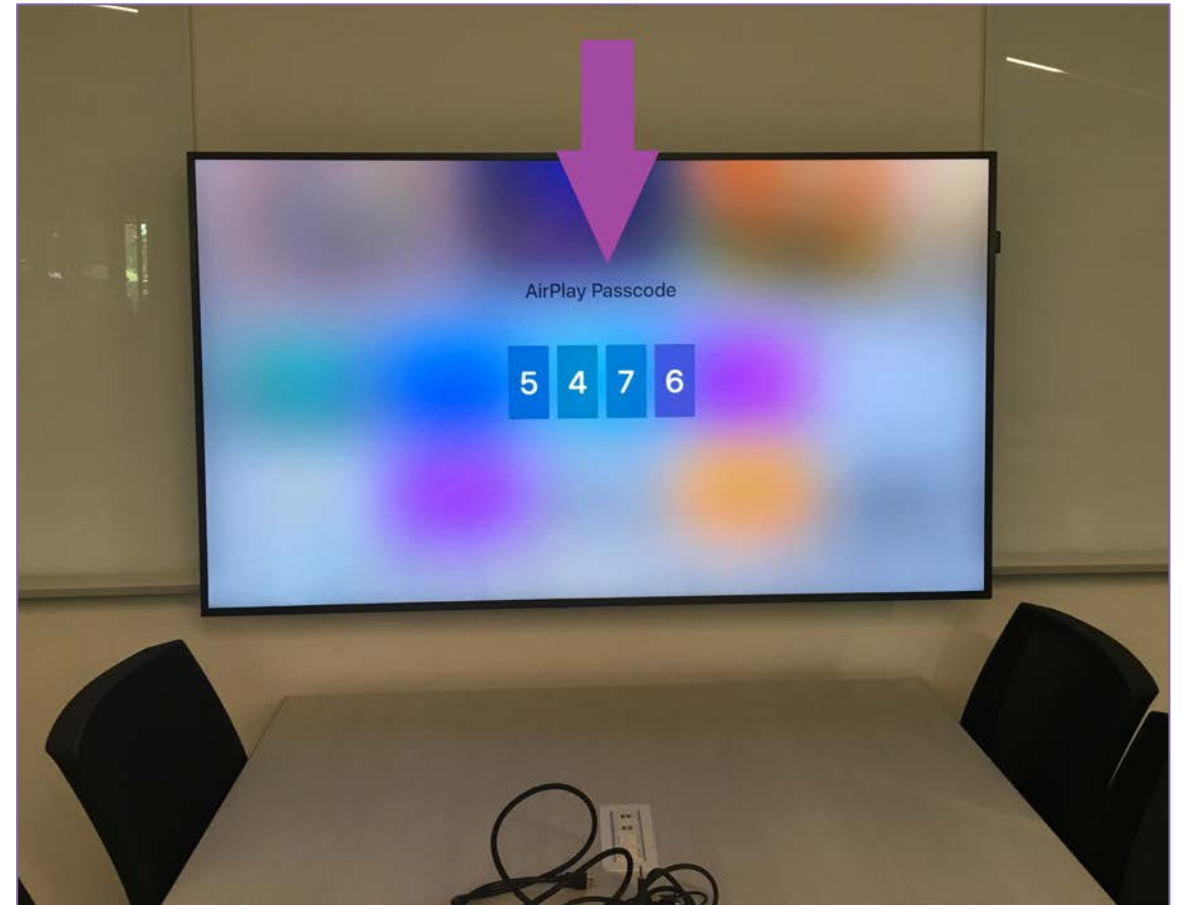


SCC 221 Active Learning Classroom, South Campus Center,
Instructional Support, HS Academic Services & Facilities

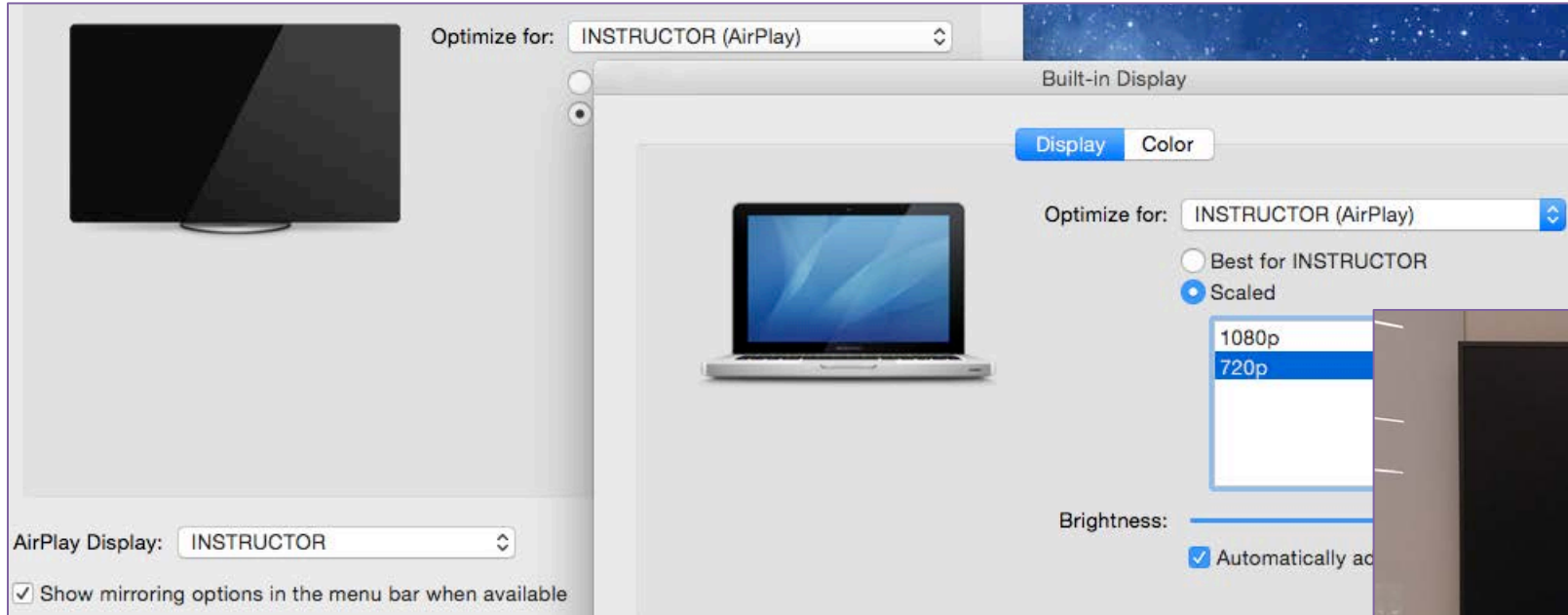
iOS / iPhone: Enter Code from Screen Displays



* Code does not stay the same

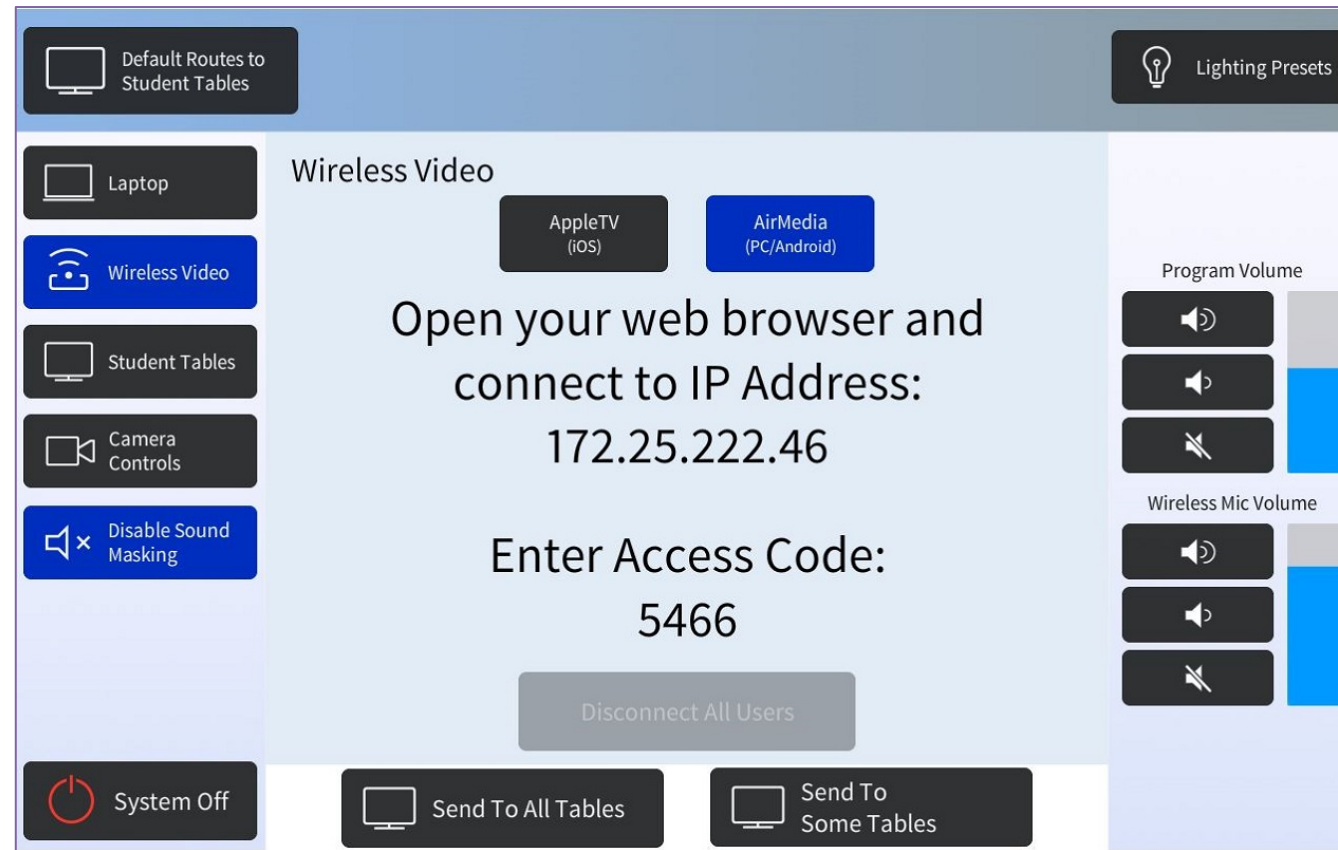


iOS Wireless Device Connected



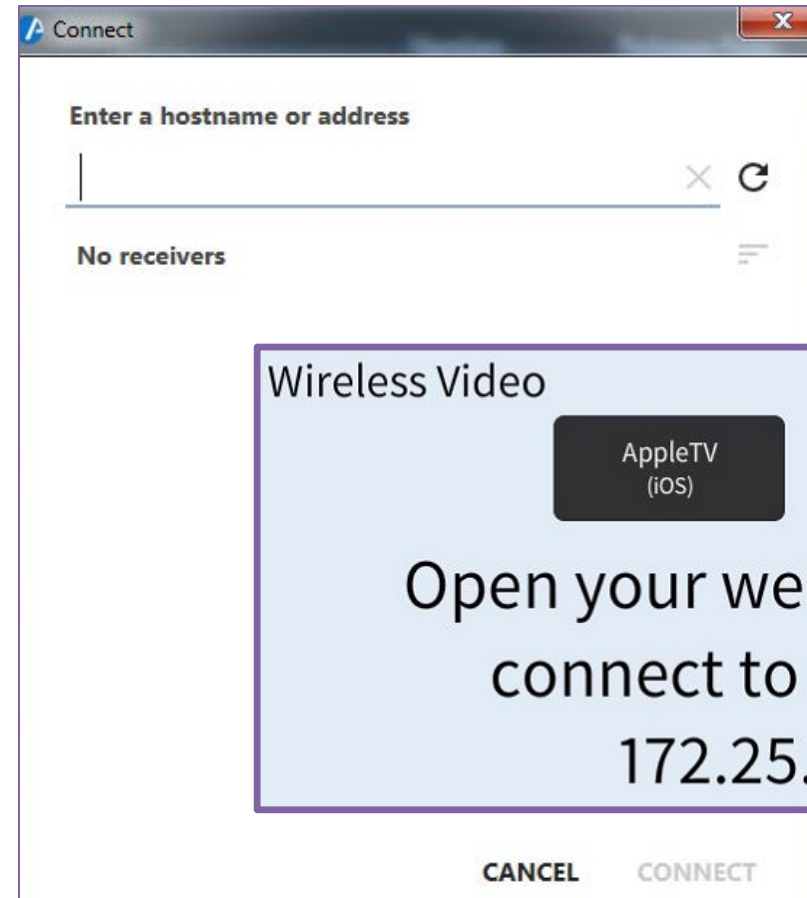
SCC 221 Active Learning Classroom, South Campus Center,
Instructional Support, HS Academic Services & Facilities

Wireless Video: Choosing AirMedia (PC/Android)

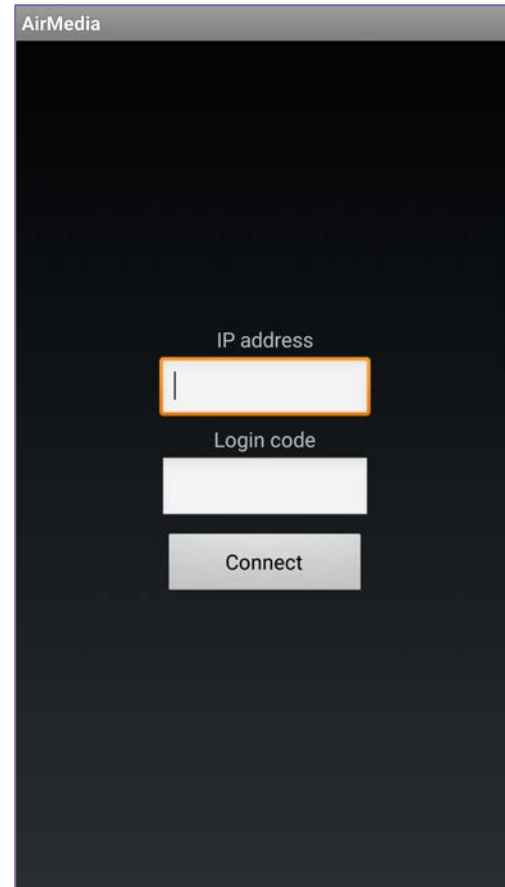


SCC 221 Active Learning Classroom, South Campus Center,
Instructional Support, HS Academic Services & Facilities

PC: Open AirMedia & Enter IP Address



Android: Open AirMedia & Enter IP Address



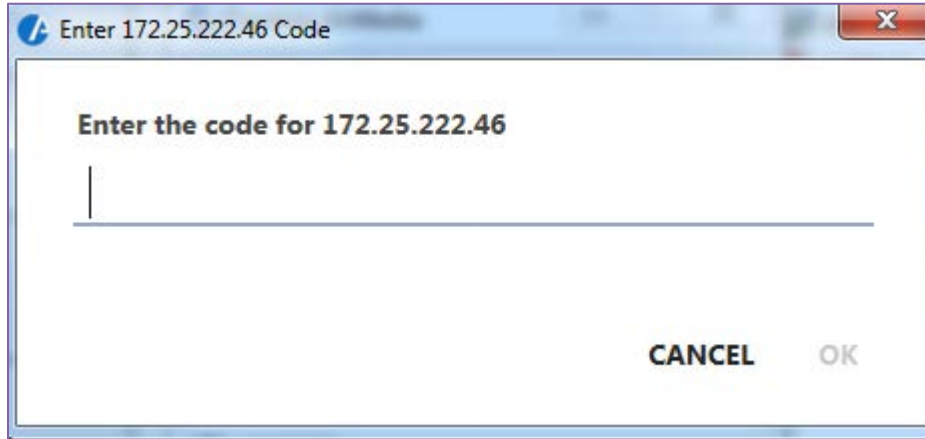
Wireless Video

AppleTV
(iOS)

AirMedia
(PC/Android)

Open your web browser and
connect to IP Address:
172.25.222.46

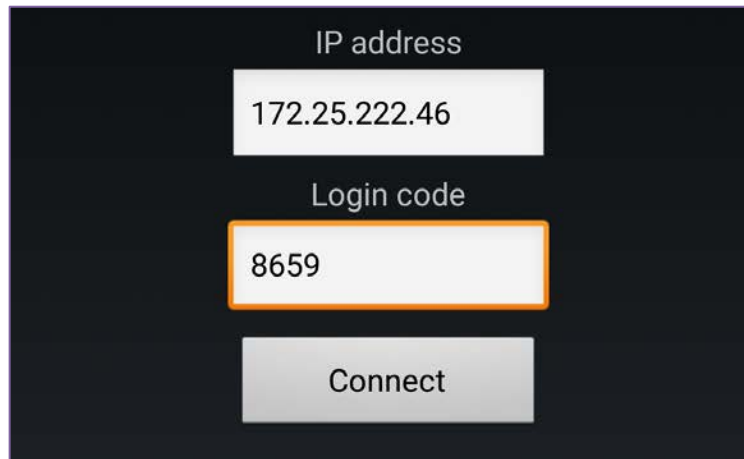
PC / Android: Enter Code from Lectern



Enter 172.25.222.46 Code

Enter the code for 172.25.222.46

CANCEL OK



IP address

172.25.222.46

Login code

8659

Connect

* Code does not stay the same

Wireless Video

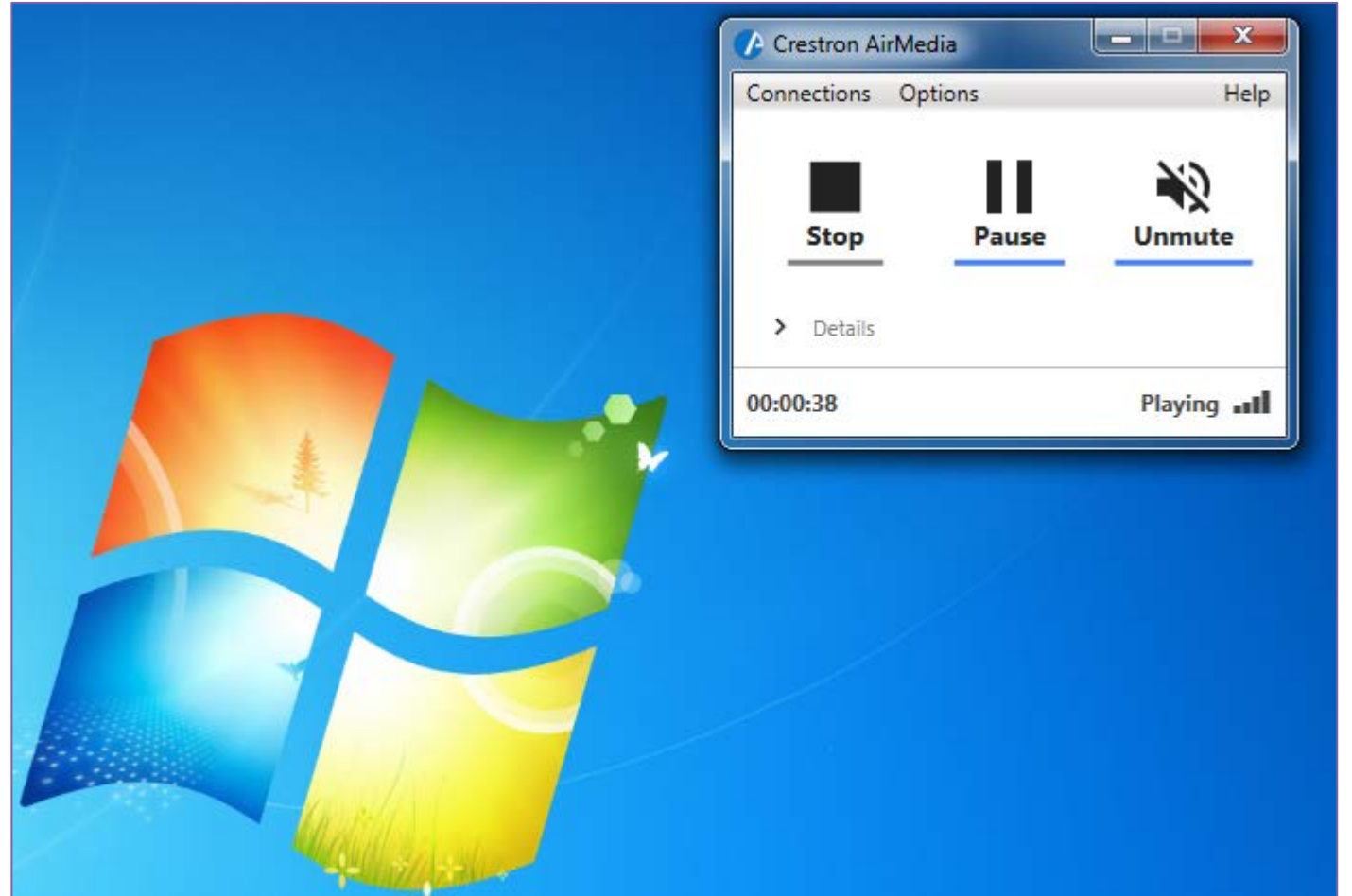
AppleTV
(iOS)

AirMedia
(PC/Android)

Open your web browser and
connect to IP Address:
172.25.222.46

Enter Access Code:
5466

PC / Android Wireless Device Connected



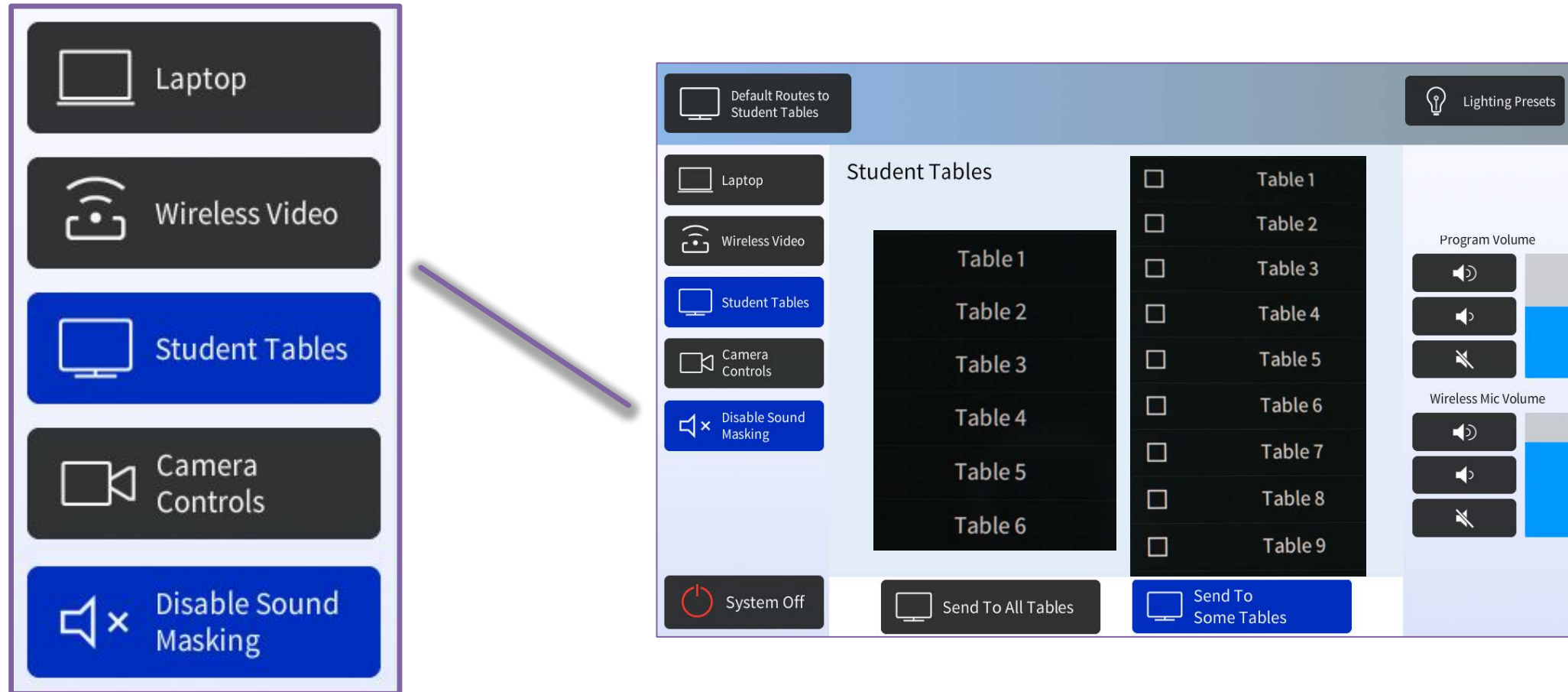
SCC 221 Active Learning Classroom, South Campus Center,
Instructional Support, HS Academic Services & Facilities

PC / Android Wireless Device Displayed



SCC 221 Active Learning Classroom, South Campus Center,
Instructional Support, HS Academic Services & Facilities

Send Student Table Content to All/Some Tables



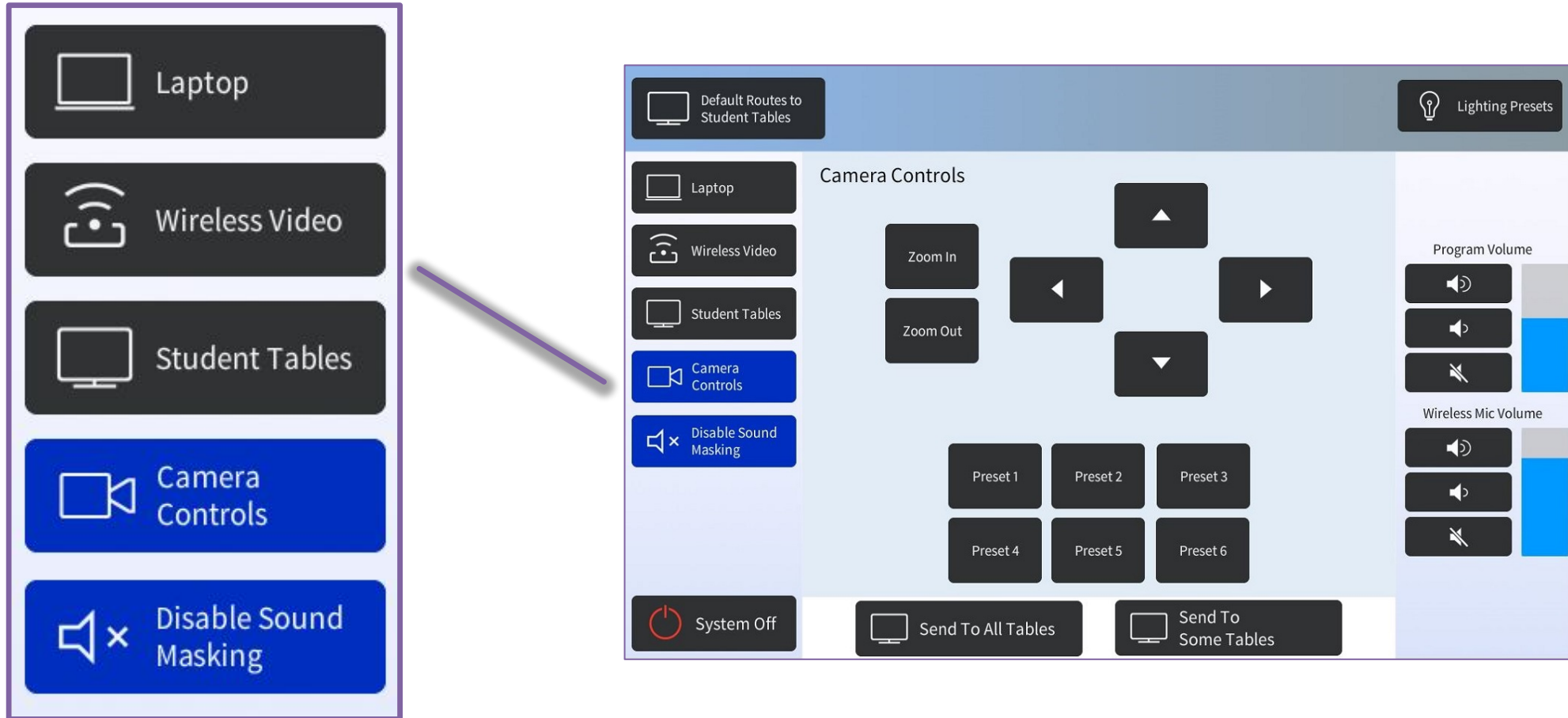
SCC 221 Active Learning Classroom, South Campus Center,
Instructional Support, HS Academic Services & Facilities

ALC Camera



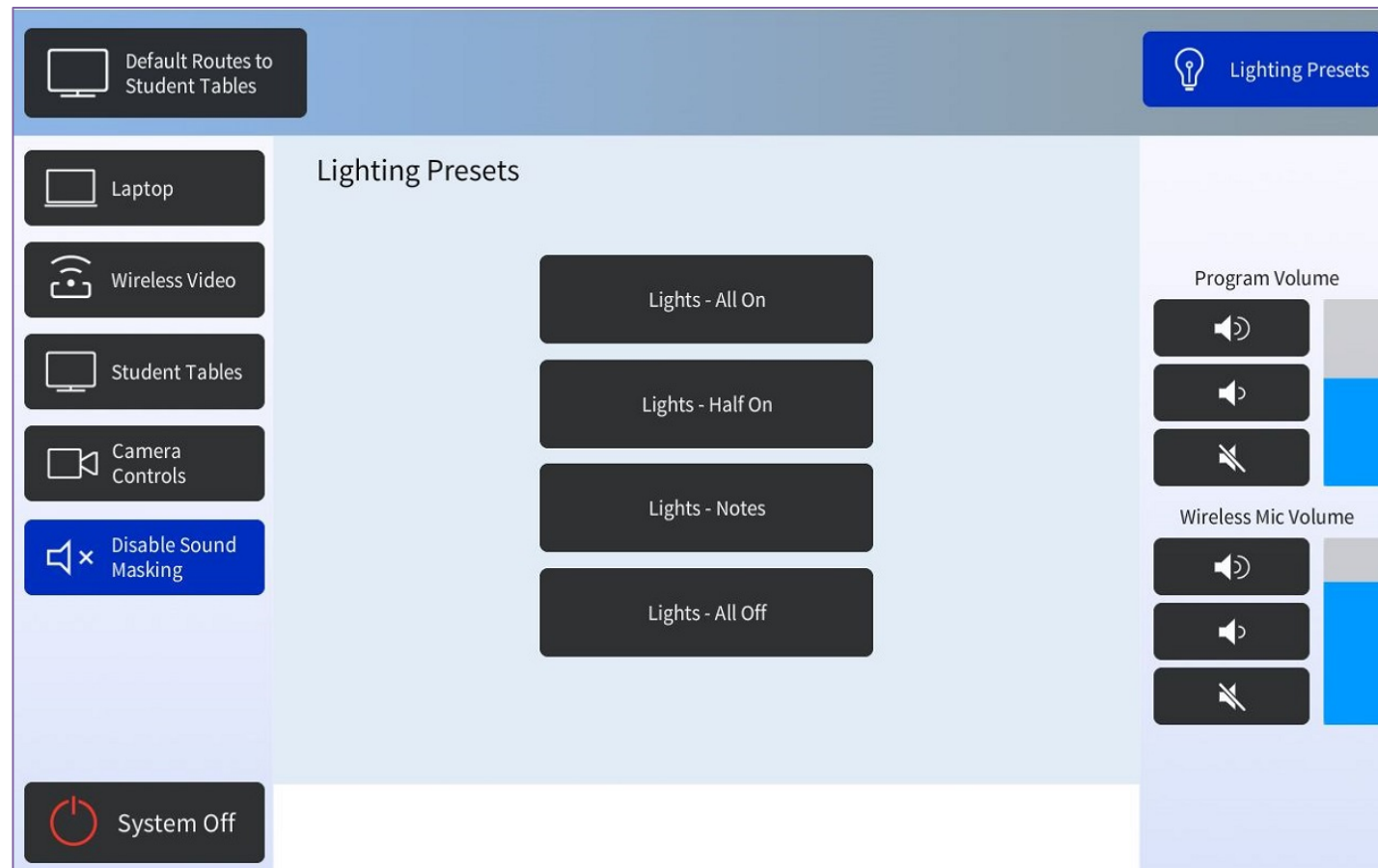
SCC 221 Active Learning Classroom, South Campus Center,
Instructional Support, HS Academic Services & Facilities

Lectern: Camera Controls



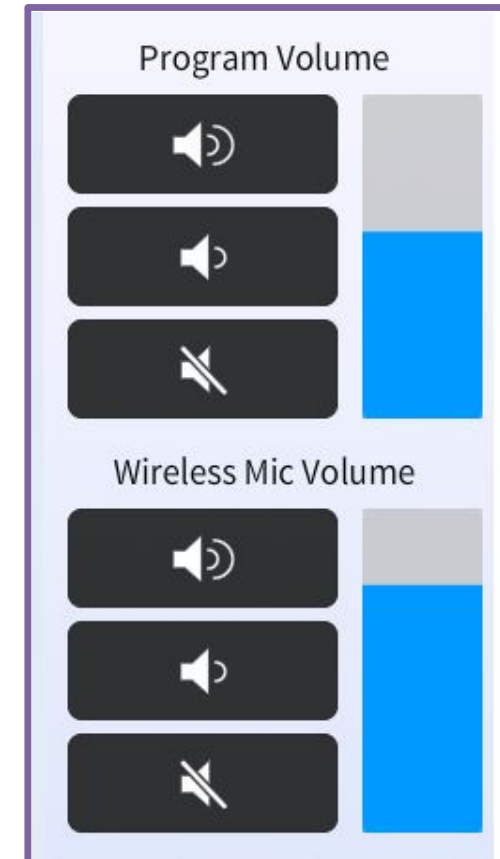
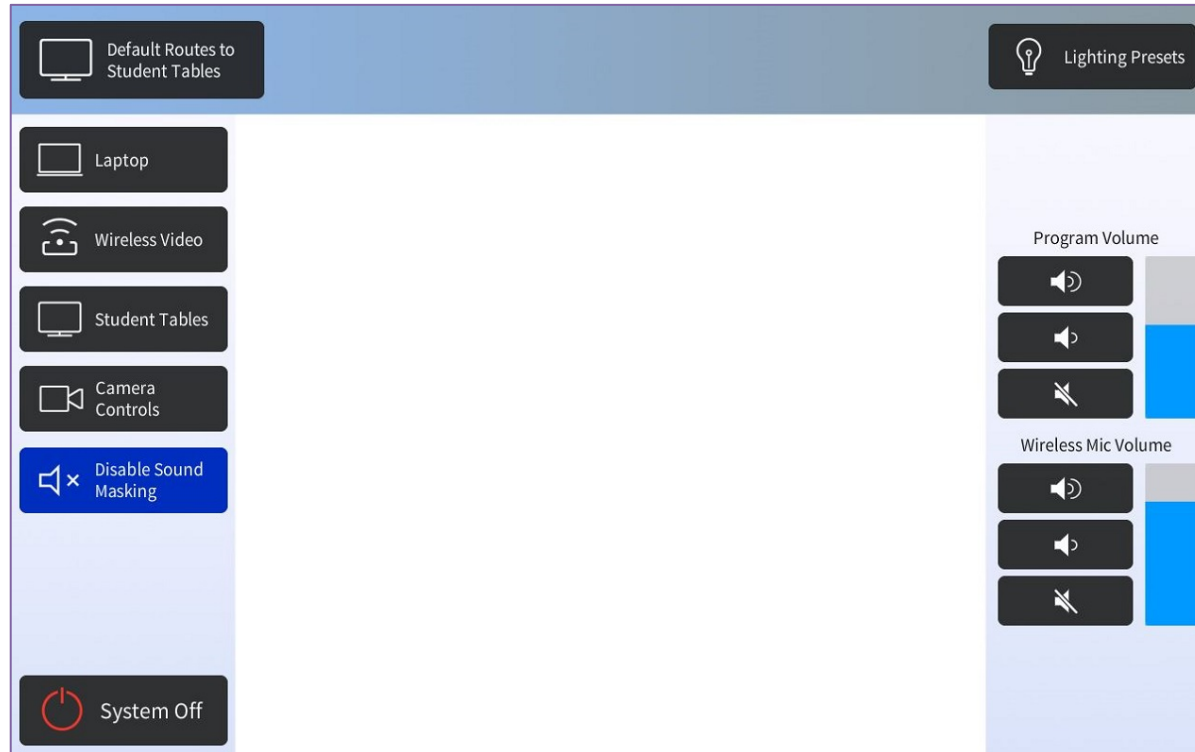
SCC 221 Active Learning Classroom, South Campus Center,
Instructional Support, HS Academic Services & Facilities

Lectern: Lighting Controls



SCC 221 Active Learning Classroom, South Campus Center,
Instructional Support, HS Academic Services & Facilities

Lectern: Audio Controls

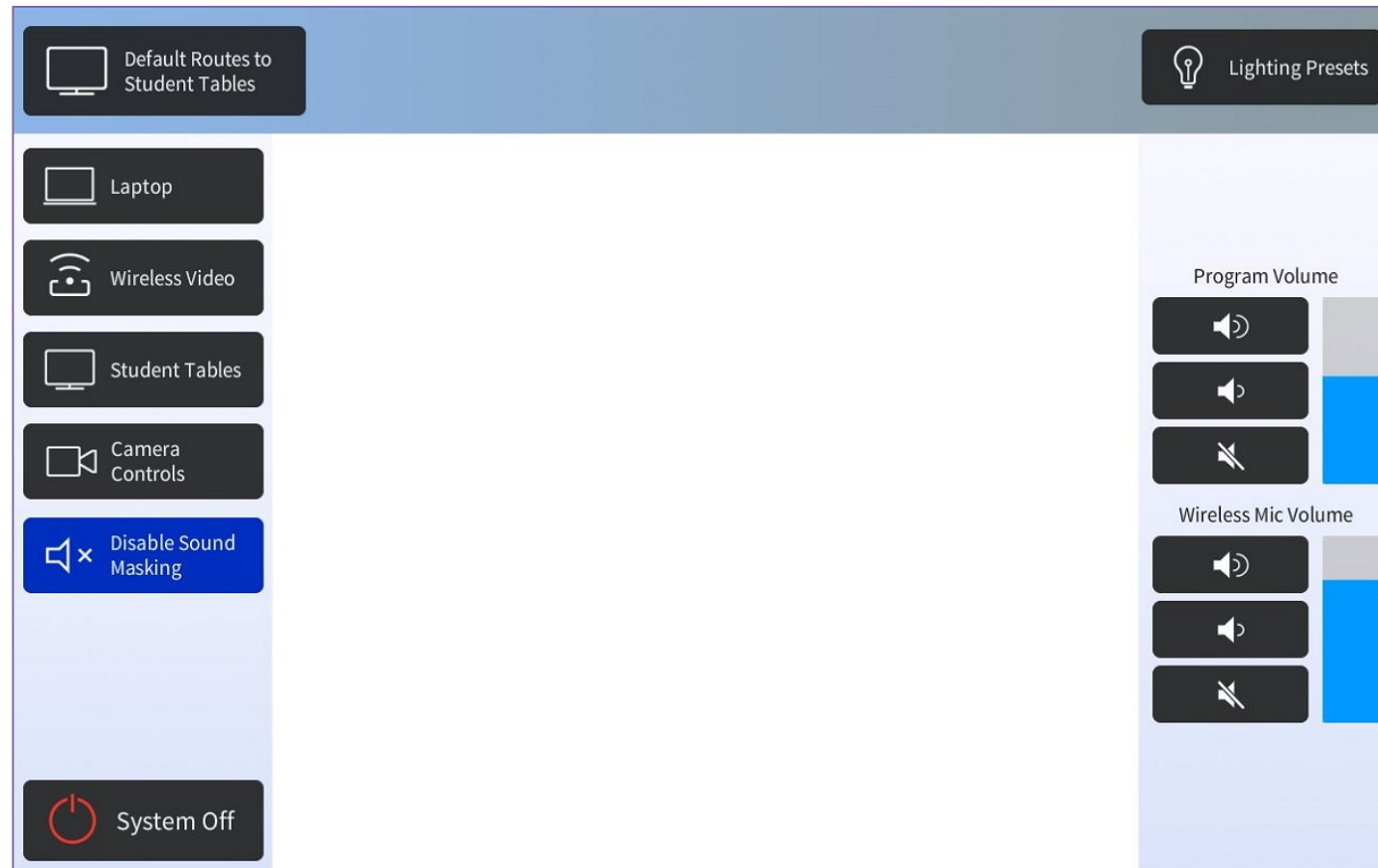


Wireless Mic



SCC 221 Active Learning Classroom, South Campus Center,
Instructional Support, HS Academic Services & Facilities

Use Sound Masking: MediaSite Recordings



SCC 221 Active Learning Classroom, South Campus Center,
Instructional Support, HS Academic Services & Facilities

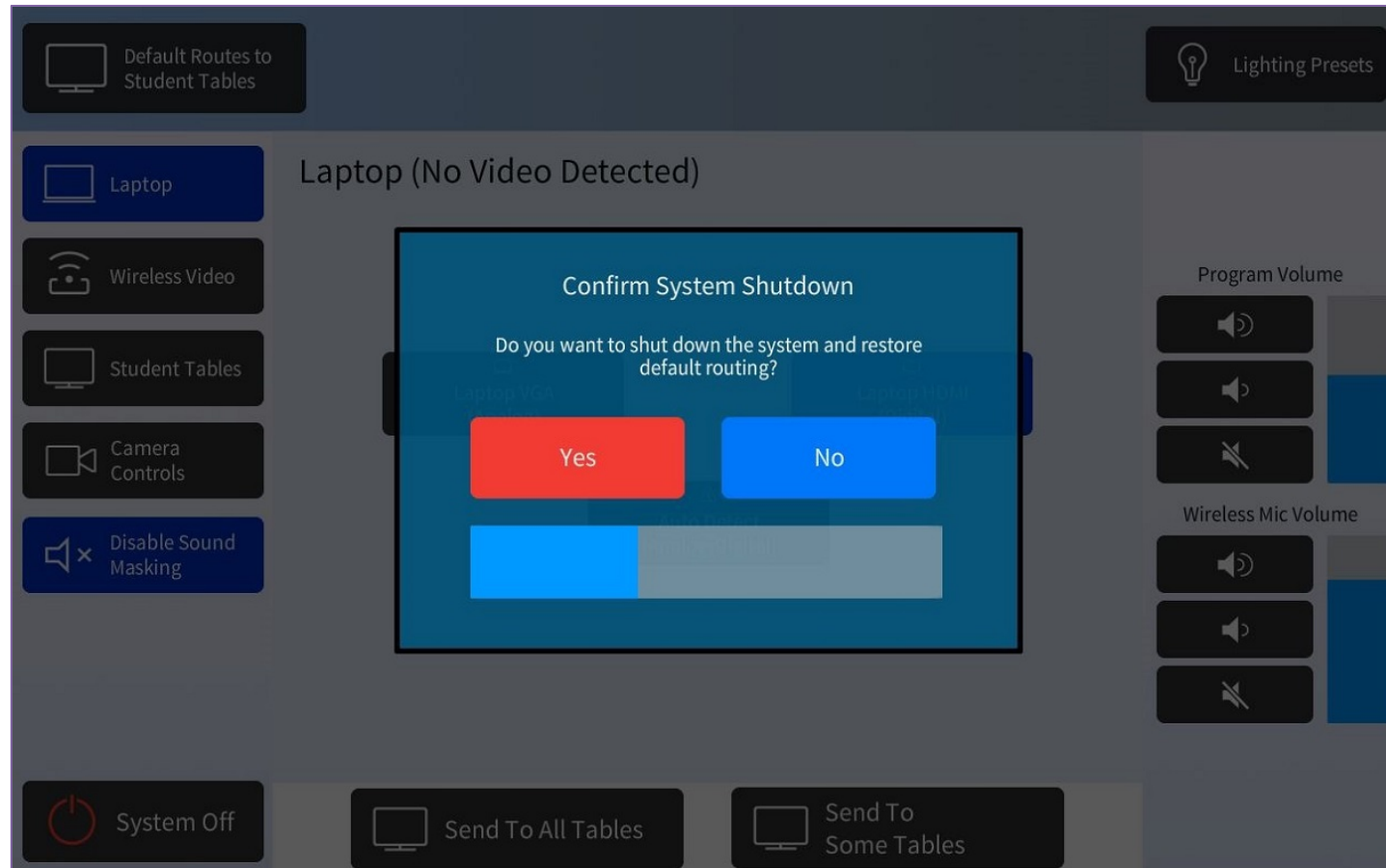
Web Video Conferencing

- AV Bridge Room Standard
- Allow connection to service of your choice
- Bring your own device (BYOD)



Adobe® Connect™

Lectern: System Off



SCC 221 Active Learning Classroom, South Campus Center,
Instructional Support, HS Academic Services & Facilities